

ENDO'S™ SPARK ARRESTORS

Thank you for purchasing the Pro Moto Billet Spark Arrestor. If you have any questions during the installation of your Spark Arrestor, please give us a call.

(PMB-01-3107)

MODELS	YEARS
50SX PRO SENIOR LC	2002-2005
50 JUNIOR ADVENTURE	2002-2003
50 SENIOR ADVENTURE	2002-2007
50 MINI ADVENTURE	2002-2008
50SX PRO JUNIOR LC	2002-2005
50SX PRO SENIOR LC	2002-2005
50SX	2006-2008, 2010-2014
50SX MINI	2008-2014
50SX JUNIOR	2006, 2008-2009
65SX	2002-2014
65XC	2008-2009

Parts List: (1) Spark Arrestor Base, (2) M6 Bolts, (1) Screen

NOTE: If you do not have the proper tools, have your dealer install the end cap for you.

Installation Instructions:

1. Remove the two bolts holding the stock nozzle in place. (Figure 1)
2. Pull the stock nozzle out of the canister.
3. In order to allow the inner core to align with your new Spark Arrestor Base, loosen the bolt holding the canister to the sub frame. (Figure 2)
4. Install the Spark Arrestor Base into the canister.
5. Insert the Spark Arrestor Screen into Spark Arrestor Base.
6. Install and tighten the stock nozzle with the two supplied M6 bolts and stock lock washers. (Figure 3)
7. Tighten the bolt holding the canister to the sub frame.



Figure 1



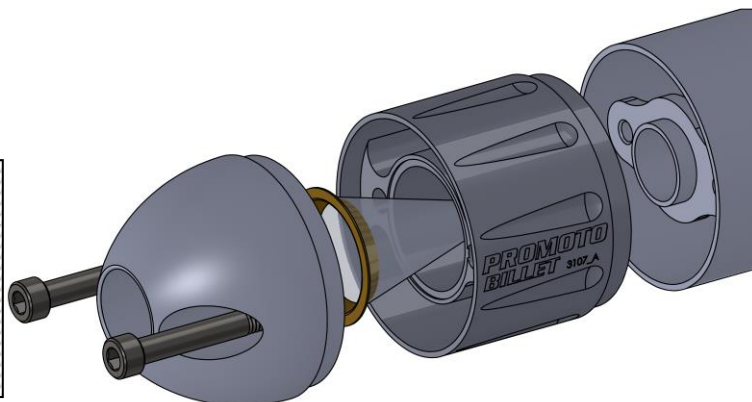
Figure 2



Figure 3

CAUTION:

You must check the condition of the spark arrestor often! Your spark arrestor will not function properly if there are holes in the screen!



Questions?

Pro Moto Billet
11461 Lone Star Rd
Nampa ID 83651
208-466-4762
sales@promotobillet.com

Check out our Kickstands, Billet Cargo Racks, Shark Fins and other billet accessories at...

PROMOTO
BILLET.COM